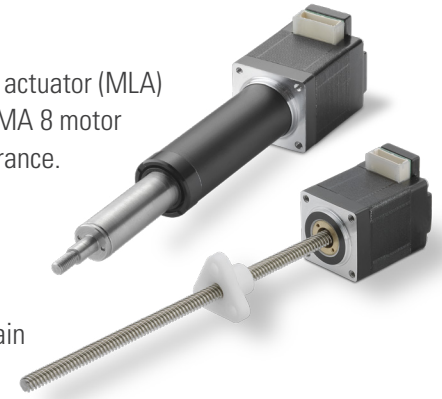


Stepper Motor Specification Change Notice

This notice is to inform you of a change to the stepper motor utilized in the NEMA 8 versions of the actuator (MLA) and rotating screw (MLS) configurations of our stepper motor linear actuators (SMLA). The new NEMA 8 motor offers a **40% increase in torque capacity** over the previous motor and has a slightly different appearance. External dimensions of the SMLAs have not changed. No other standard NEMA motor sizes offered within the Thomson SMLA portfolio are impacted by this change.

This change is effective immediately with corresponding part number, electrical, appearance and performance changes detailed below. A small quantity of the old-style NEMA 8 MLA and MLS remain and are reserved for “last-time buy” purposes of existing programs.

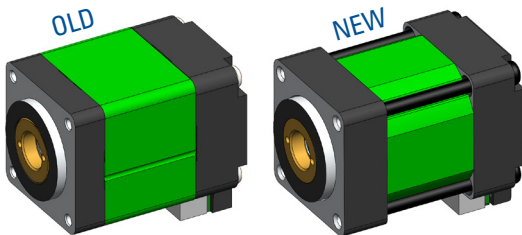


If you have any questions, please contact Thomson Customer Support at 540-633-3549 or thomson@thomsonlinear.com.

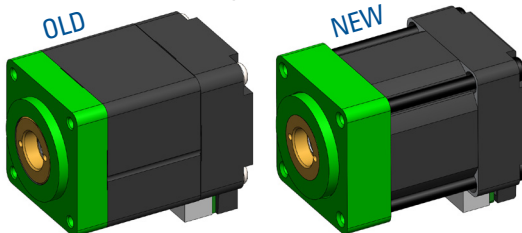
Part Number Changes			Electrical Changes		
	OLD	NEW	OLD	NEW	
Assembly	MLS08A05-xxxxxxxxxxxx-xxxx-xxx	MLSX8A05-xxxxxxxxxxxx-xxxx-xxx	Current per Phase (Amps)	0.5	0.5
	MLA08A05-xxxxxxxx-xx-S01	MLAX8A05-xxxxxxxx-xx-S01		Holding Torque (oz-in [mN-m])	2.2 (16)
Motor	MLS: 08RSA050	MLS: 08RSA050B	Resistance (Ohms)		9
	MLA: 08CSA050	MLA: 08CSA050B			

Appearance Changes

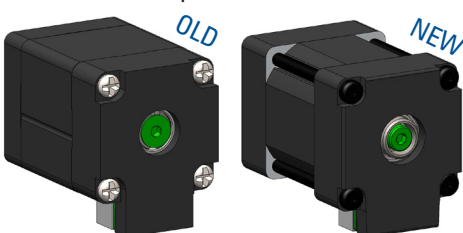
More compact stator laminations



Thicker front end cap

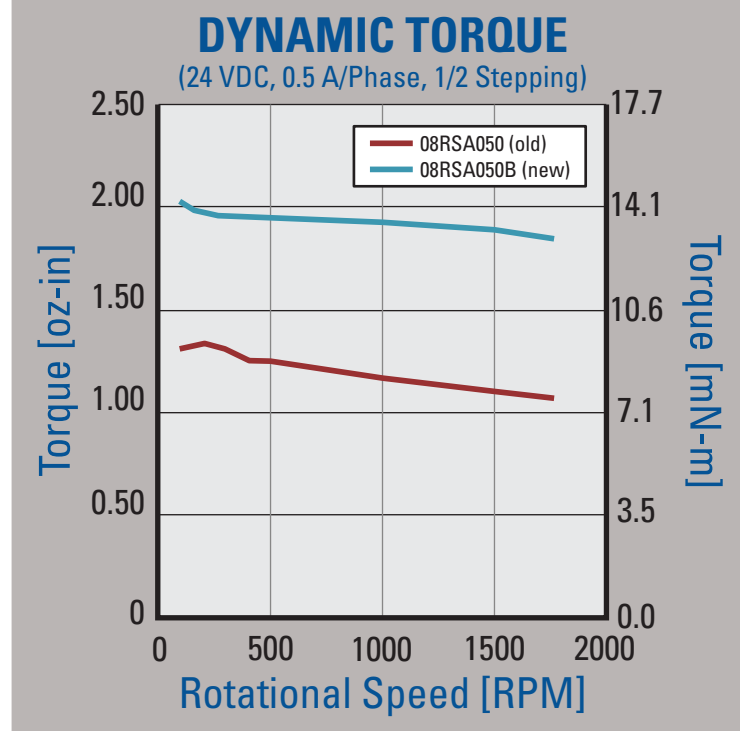


Lead screw retaining fastener now uses socket head cap screw instead of flathead



Performance Changes

New motor has higher torque



Visit www.thomsonlinear.com/smla to learn more about Thomson stepper motor linear actuators and the benefits they will bring to your linear motion designs.